



AlabamaLandAgent.com

Land • Farms • Lake Property

Chad Camp  
205-478-4974



62+/- ACRES

Ashville, AL ~ GPS 33.56102, -86.03369

Enjoy level farm land for sale with barn, home and 3-4 potential home sites to expand for newer homes. Conveniently located just minutes off Eastaboga Exit off I-20. Current owner has lived there since the 60's and land has been row cropped for corn and soybean. This could make a great cattle farm but will need additional fencing. 1 acre Gated fenced enclosure around the barn and home. The Farm Home is 3Br 1Ba, small den, kitchen and laundry room. Home is heated with wall heaters and cooled with window units. 24x24 detached car garage with 1 automatic door opener, well/public water house, shed, equipment shed and large barn. Barn is 30 x 51 with three 10 x 30 Bays, 20 x 30 storage room and 10 x 30 loft area. Talladega Municipal Airport is 1,000 ft. air strip and is only 2.5 miles from the property. Truly a multi-generational farm. Additional 14+/- acres across the road available for a home site \$69,900.

Directions: From Birmingham. Go I-20 to Exit 173. Turn right onto Speedway Blvd then turn left onto Eastaboga Rd. Then turn left on Brickstore Rd.

Chad Camp  
(205) 478-4974



AlabamaLandAgent.com

Land • Farms • Lake Property



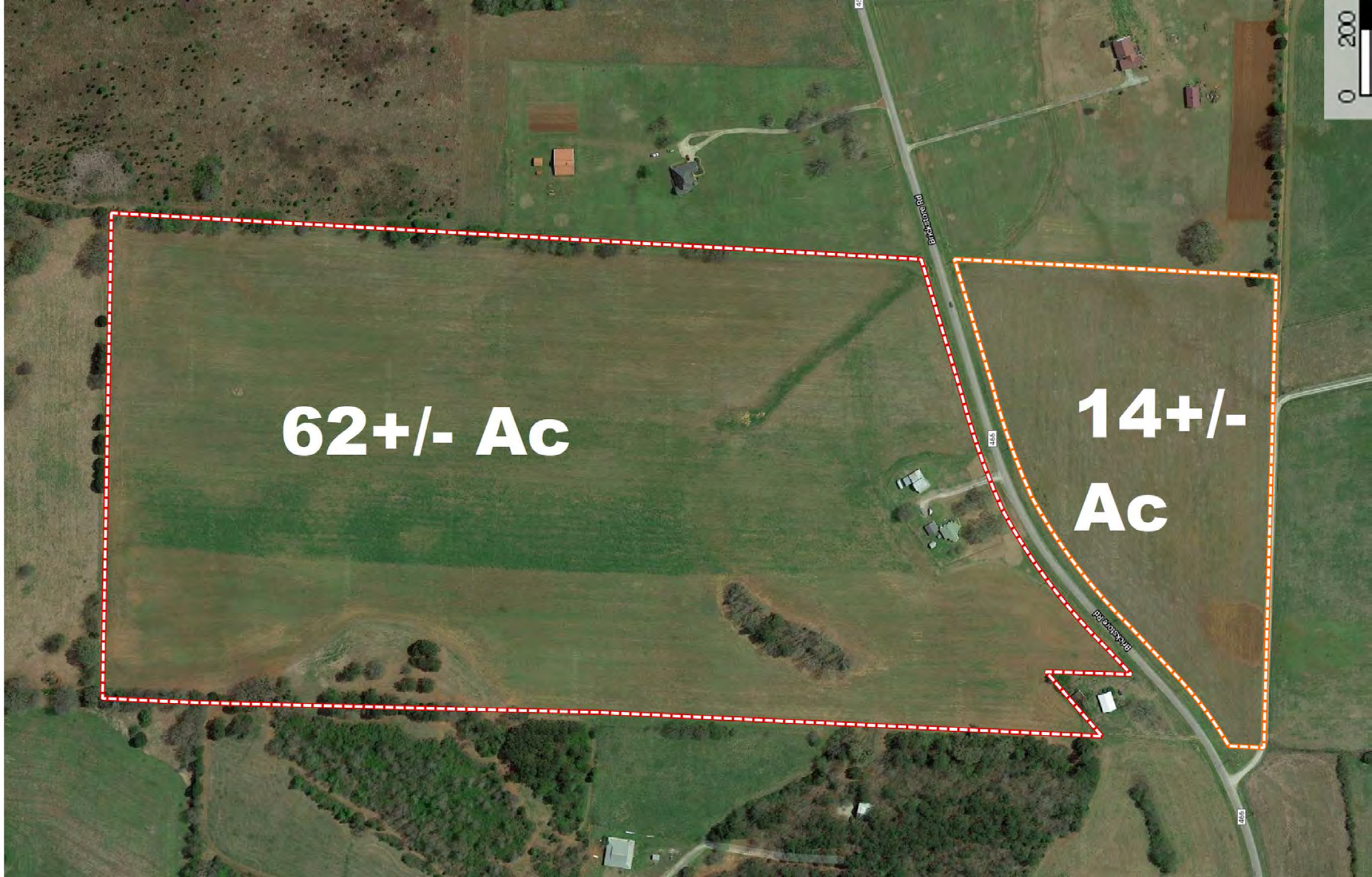
**62+/- Ac**

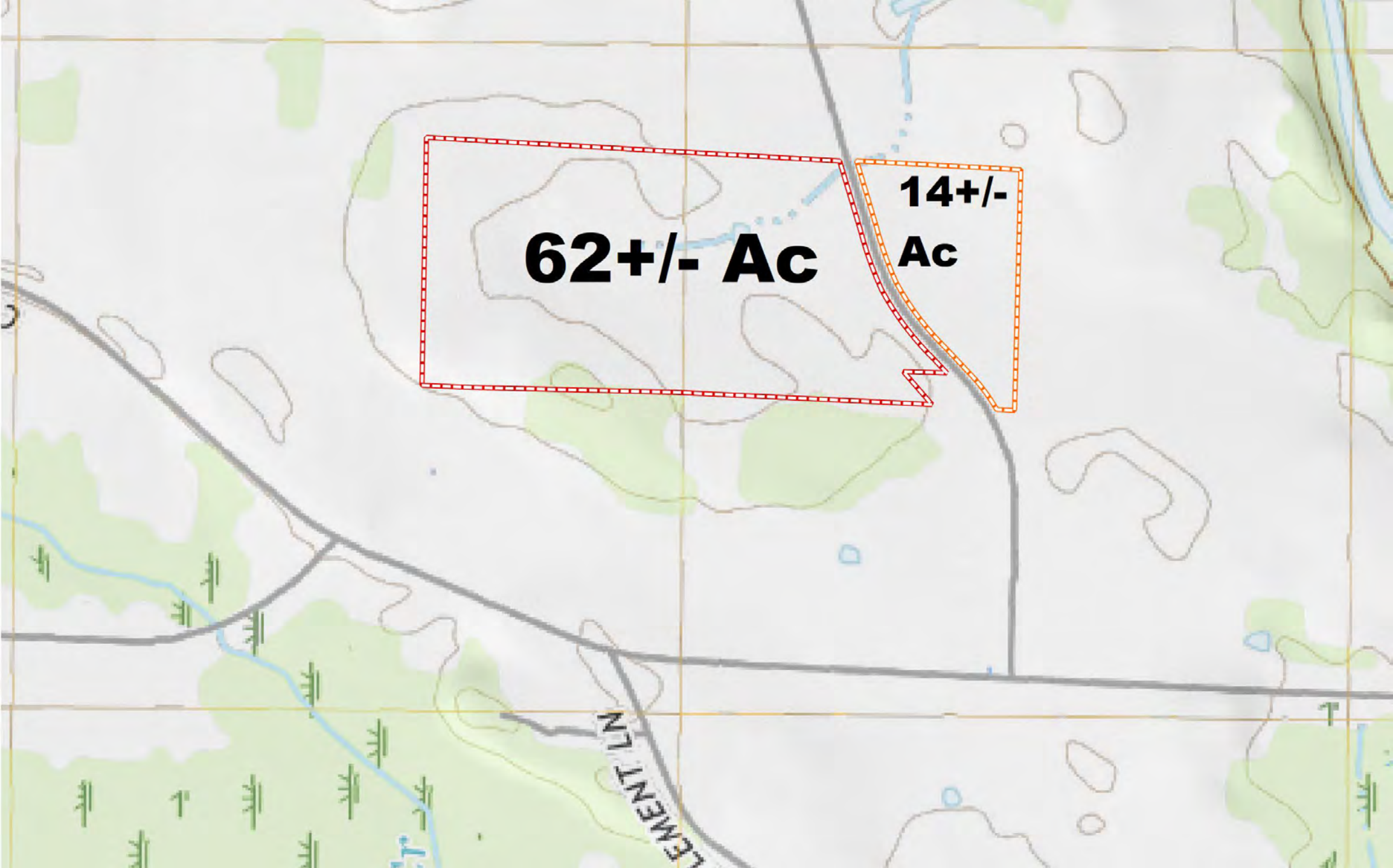
**14+/-  
Ac**

Blackhawk Dr

Blackhawk Dr

0 200



A topographic map showing land parcels. A large parcel is outlined in red and labeled '62+/- Ac'. A smaller parcel to its right is outlined in orange and labeled '14+/- Ac'. The map features contour lines, a road labeled 'LEWENT LN', and a stream. The background is light green and grey, representing different terrain elevations.

**62+/- Ac**

**14+/-  
Ac**

LEWENT LN