



Alabama**LandAgent.com**

Land • Farms • Lake Property

Chad Camp
205-478-4974



50+/- ACRES

Springville, AL - GPS 33.8509, -86.3905

See for Miles! 49+/-Acre Farm for sale with extraordinary Smokey Mountain Like views on Straight Mountain. Currently leased as a tomatoe farm. Farm offers multiple home sites with scenic mountain and pond views. Several hundred feet on Co Rd 24. Elevation is approximate 1300 ft. and Crawford Cove Road's elevation is 720 ft. Opportunities to divide the property but seller will not divide. Tiered drop-offs with ridged ledges can be seen navigating along the natural slopes. 1 acre pond on the property is used for irrigating the tomatoe fields. Included is a 30x40 Butler Steel Building with Power and insulated sprayed foamed room. Rare opportunity to own a large tract of land with a pond and views on Straight Mountain.

Directions: Go I-59 to Springville Exit. Turn Left. Go past Springville up the mountain past Homestead Hollow. Turn right onto Co Rd 24. Property on the right before Walkers Gap Road.

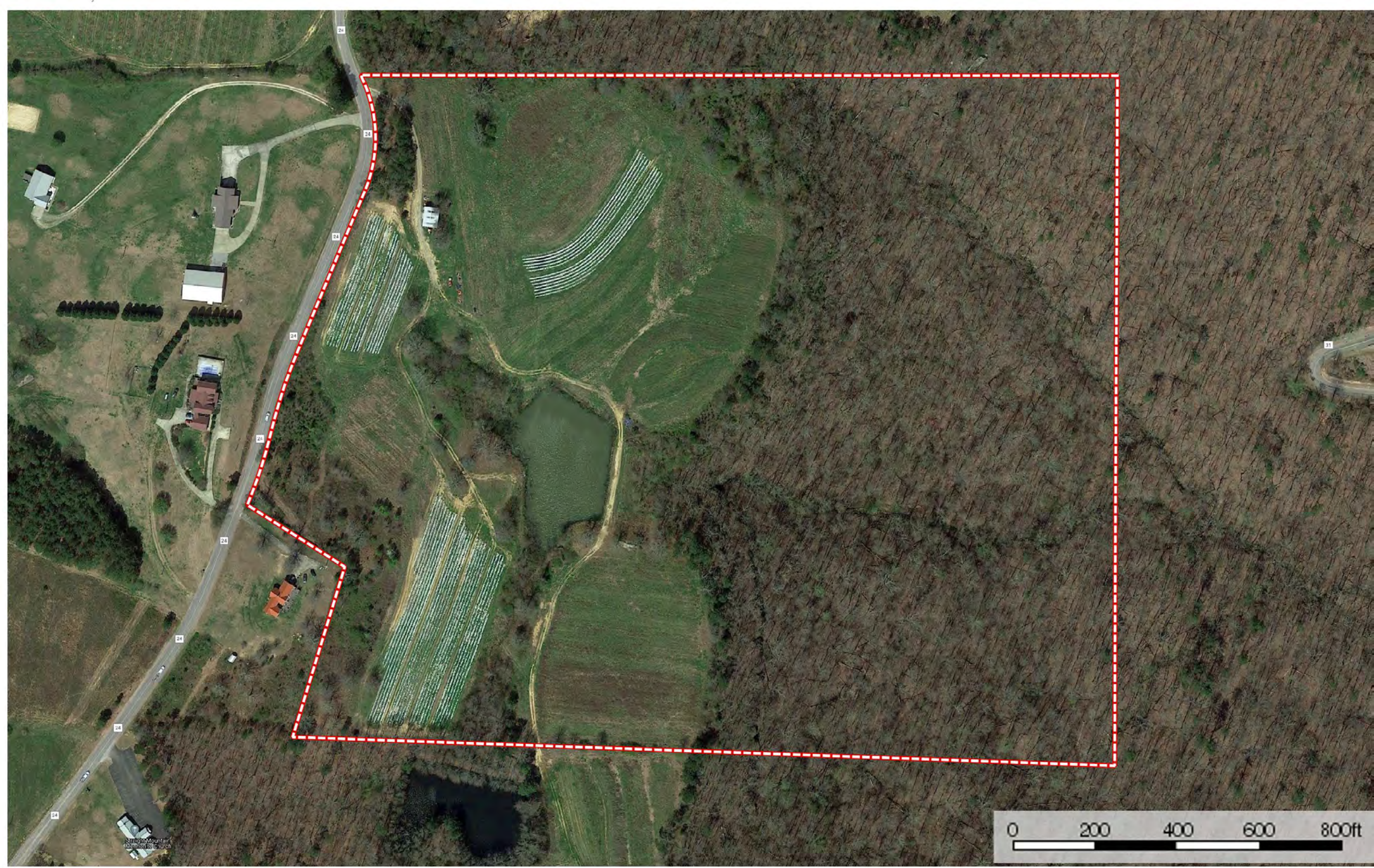
Chad Camp
(205) 478-4974



Alabama**LandAgent.com**


Land • Farms • Lake Property





 Boundary



 Boundary