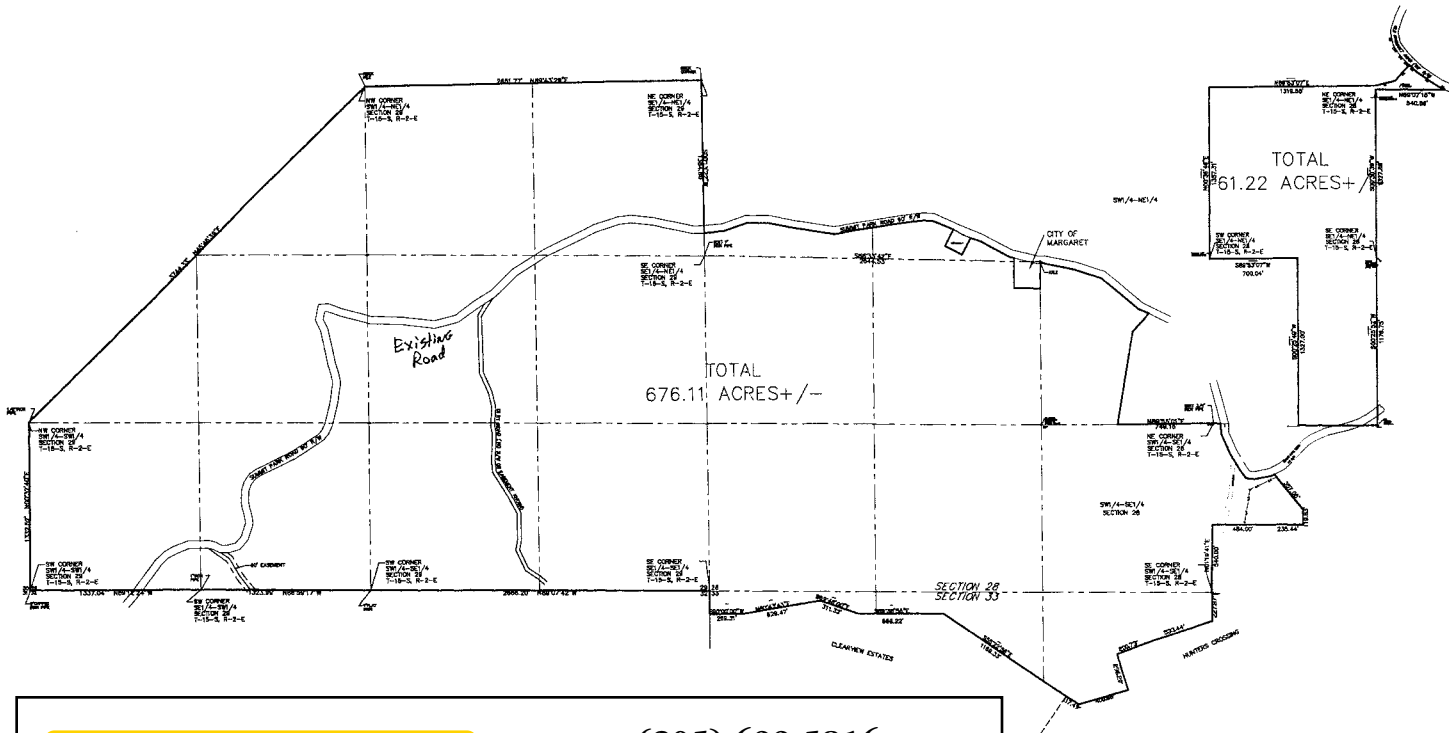


GREAT DEVELOPMENT LAND



737+/- acres with nearly 2 miles of paved road frontage with much of it on both sides of road. Sewer available, Water available, Water tank approved to be onsite, fire station onsite, and great views in the Margaret area. Call agent/owner for more details or other projects. No zoning. Great for many uses. All types of terrain.



(205) 699-5816
www.LovejoyRealty.com
www.StClairAL.com

Brian Camp
(205) 819-1733